

\$579,900 - 32 Lorraine Crescent, St. Albert

MLS® #E4432595

\$579,900

6 Bedroom, 3.50 Bathroom, 1,894 sqft

Single Family on 0.00 Acres

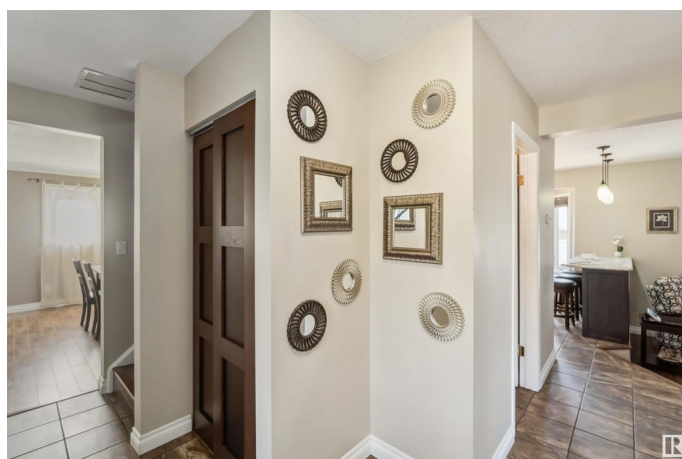
Lacombe Park, St. Albert, AB

Come home to this beautifully updated and renovated 1,910sqft, 5-BEDROOM, move-in-ready, 2-storey FAMILY HOME in Lacombe Park. The main floor features a stunning kitchen, formal dining room, massive living room, sunken family room with fireplace, powder room, and convenient laundry located next to the side entrance. Upstairs, youâ€™ll find 4 spacious bedrooms, including a serene primary suite with an ensuite bath. The fully developed basement adds serious bonus space with a sauna, a hockey-themed rec room with a wet bar, 5th bedroom, and generous storage. Situated on a corner lot in a quiet CUL-DE-SAC location, this home blends modern updates with family-friendly function, perfect for making memories. All this home needs is YOU!

Built in 1976

Essential Information

MLS® #	E4432595
Price	\$579,900
Bedrooms	6
Bathrooms	3.50
Full Baths	3
Half Baths	1
Square Footage	1,894
Acres	0.00



Year Built	1976
Type	Single Family
Sub-Type	Detached Single Family
Style	2 Storey
Status	Active

Community Information

Address	32 Lorraine Crescent
Area	St. Albert
Subdivision	Lacombe Park
City	St. Albert
County	ALBERTA
Province	AB
Postal Code	T8N 2R3

Amenities

Amenities	Air Conditioner, Deck, Detectors Smoke, Gazebo, Recreation Room/Centre, Sauna; Swirlpool; Steam, Wet Bar
Parking	Double Garage Attached, Heated, Insulated, RV Parking

Interior

Interior Features	ensuite bathroom
Appliances	Air Conditioning-Central, Dishwasher-Built-In, Dryer, Garage Control, Garage Opener, Microwave Hood Fan, Refrigerator, Stove-Electric, Washer, Window Coverings
Heating	Forced Air-1, Natural Gas
Stories	3
Has Basement	Yes
Basement	Full, Finished

Exterior

Exterior	Wood, Brick, Metal
Exterior Features	Corner Lot, Cul-De-Sac, Fenced, Flat Site, Landscaped, Schools, Treed Lot
Roof	Asphalt Shingles
Construction	Wood, Brick, Metal
Foundation	Concrete Perimeter

School Information

Elementary	Ronald Harvey Elementary
------------	--------------------------

Middle	William D Cuts School
High	Bellerose Composite High

Additional Information

Date Listed	April 24th, 2025
Days on Market	2
Zoning	Zone 24

DATA IS DEEMED RELIABLE BUT IS NOT GUARANTEED ACCURATE BY THE REALTORS® ASSOCIATION OF EDMONTON. COPYRIGHT 2025 BY THE REALTORS® ASSOCIATION OF EDMONTON. ALL RIGHTS RESERVED. Trademarks are owned or controlled by the Canadian Real Estate Association (CREA) and identify real estate professionals who are members of CREA (REALTOR®, REALTORS®) and/or the quality of services they provide (MLS®, Multiple Listing Service®)

Listing information last updated on April 25th, 2025 at 11:17pm MDT