

## **\$259,900 - 76 2905 141 Street, Edmonton**

---

MLS® #E4432464

**\$259,900**

2 Bedroom, 1.00 Bathroom, 816 sqft

Condo / Townhouse on 0.00 Acres

Chappelle Area, Edmonton, AB

Welcome to this beautiful and versatile open-concept townhome. This near-perfect condition home includes a spacious living room, modern kitchen with island, 2 bedrooms, bathroom, and lots of room for storage space. Some high-quality finishes include an updated entrance glass rail, stainless steel appliances, and laminate flooring. There's also main-level laundry, a private front yard, an attached 2-car tandem garage and plus low condo fees! You will be close to a beautiful golf course and also have access to Chappelle Gardens exclusive amenities, recreation centre, skating rink, etc. Conveniently walking distance from serene ponds, community gardens, and walking paths, plus easy access to schools, public transit & Henday. This is a great investment and listed to sell!



Built in 2016

### **Essential Information**

MLS® #	E4432464
Price	\$259,900
Bedrooms	2
Bathrooms	1.00
Full Baths	1
Square Footage	816
Acres	0.00
Year Built	2016

Type Condo / Townhouse  
Sub-Type Townhouse  
Style Bungalow  
Status Active

### Community Information

Address 76 2905 141 Street  
Area Edmonton  
Subdivision Chappelle Area  
City Edmonton  
County ALBERTA  
Province AB  
Postal Code T6W 3M4

### Amenities

Amenities Detectors Smoke, Exterior W  
Parking Double Garage Attached, Ta

### Interior

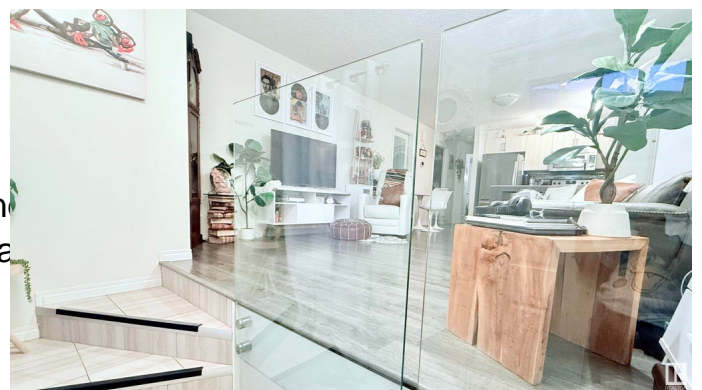
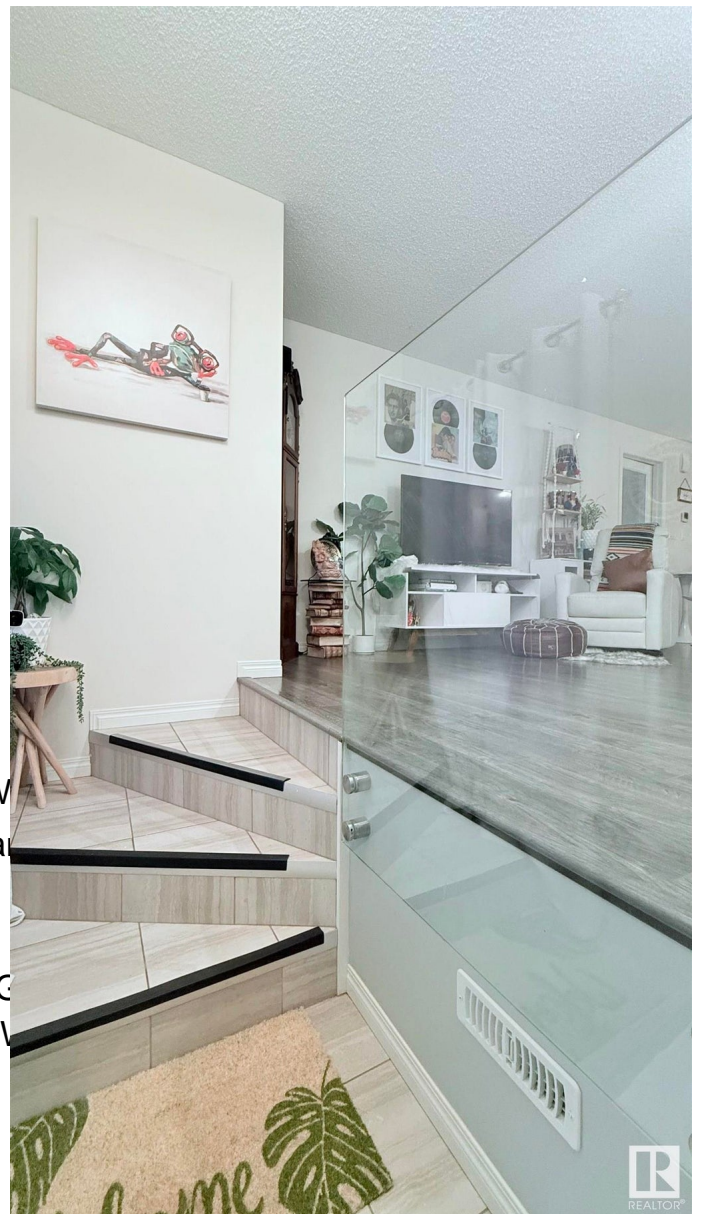
Appliances Dryer, Garage Control, C  
Refrigerator, Stove-Electric, V  
Heating Forced Air-1, Natural Gas  
Stories 2  
Has Basement Yes  
Basement Partial, Partially Finished

### Exterior

Exterior Wood, Vinyl  
Exterior Features Fenced, Golf Nearby, Lan  
Shopping Nearby, See Rema  
Roof Asphalt Shingles  
Construction Wood, Vinyl  
Foundation Concrete Perimeter

### Additional Information

Date Listed April 24th, 2025  
Days on Market 1  
Zoning Zone 55  
HOA Fees 426



HOA Fees Freq.	Annually
Condo Fee	\$230

DATA IS DEEMED RELIABLE BUT IS NOT GUARANTEED ACCURATE BY THE REALTORS® ASSOCIATION OF EDMONTON. COPYRIGHT 2025 BY THE REALTORS® ASSOCIATION OF EDMONTON. ALL RIGHTS RESERVED. Trademarks are owned or controlled by the Canadian Real Estate Association (CREA) and identify real estate professionals who are members of CREA (REALTOR®, REALTORS®) and/or the quality of services they provide (MLS®, Multiple Listing Service®)

Listing information last updated on April 25th, 2025 at 4:32pm MDT