

\$539,000 - 601 10028 119 Street, Edmonton

MLS® #E4431202

\$539,000

2 Bedroom, 2.00 Bathroom, 1,522 sqft
Condo / Townhouse on 0.00 Acres

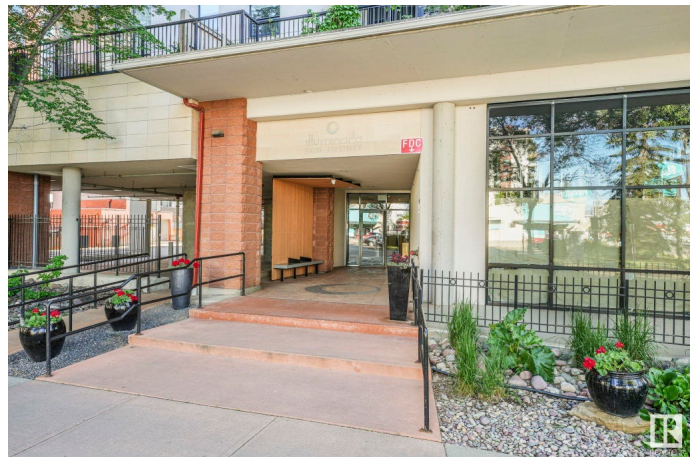
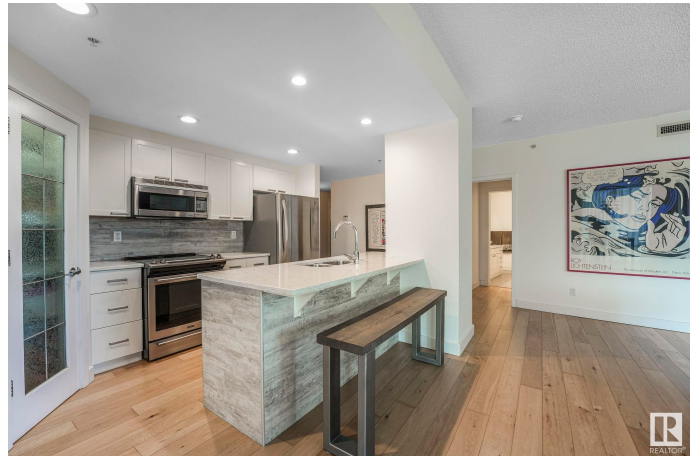
W&A hkw&ant&win, Edmonton, AB

Luxurious executive condo with 1,522 square feet of refined living space. This stunning unit features 2 bedrooms plus a versatile den & 2 full bathrooms. The master suite boasts a lavish ensuite with a large soaker tub and a separate shower, offering a spa-like retreat. Easily fit a king size bed. Large walk in closet. The open-concept main living area is bathed in natural light from the south-facing windows, providing a delightful peek-a-boo view of the river valley. Gas fireplace for cozy winter nights. The bright white kitchen is fully updated, showcasing stainless steel appliances, a corner pantry, and a large island with an undermount sink. Large storage room insuite with laundry. South facing deck with gas line. Storage cage in front of 2 underground parking stalls & a prime location within walking distance to the river valley, golf, restaurants, & shopping. This updated condo epitomizes luxury & convenience in one of the city's most desirable neighborhoods. Pets allowed with restrictions.

Built in 2004

Essential Information

MLS® #	E4431202
Price	\$539,000
Bedrooms	2



Bathrooms	2.00
Full Baths	2
Square Footage	1,522
Acres	0.00
Year Built	2004
Type	Condo / Townhouse
Sub-Type	Apartment High Rise
Style	Single Level Apartment
Status	Active

Community Information

Address	601 10028 119 Street
Area	Edmonton
Subdivision	W&hkw&ant&win
City	Edmonton
County	ALBERTA
Province	AB
Postal Code	T5K 1Y8

Amenities

Amenities	Air Conditioner, Car Wash, Closet Organizers, Deck, Detectors Smoke, Guest Suite, Parking-Visitor, Smart/Program. Thermostat, Secured Parking, Security Door, Sprinkler System-Fire, Storage Cage
Parking Spaces	2
Parking	Underground

Interior

Interior Features	ensuite bathroom
Appliances	Dishwasher-Built-In, Dryer, Microwave Hood Fan, Refrigerator, Stove-Electric, Washer, Window Coverings
Heating	Heat Pump, Natural Gas
Fireplace	Yes
Fireplaces	Corner, Tile Surround
# of Stories	12
Stories	1
Has Basement	Yes
Basement	None, No Basement

Exterior

Exterior	Concrete, Brick, Stucco
Exterior Features	Back Lane, Corner Lot, Golf Nearby, Playground Nearby, Public Swimming Pool, Public Transportation, River Valley View, Schools, Shopping Nearby
Roof	Tar & Gravel
Construction	Concrete, Brick, Stucco
Foundation	Concrete Perimeter

Additional Information

Date Listed	April 16th, 2025
Days on Market	10
Zoning	Zone 12
Condo Fee	\$1,001

DATA IS DEEMED RELIABLE BUT IS NOT GUARANTEED ACCURATE BY THE REALTORS® ASSOCIATION OF EDMONTON. COPYRIGHT 2025 BY THE REALTORS® ASSOCIATION OF EDMONTON. ALL RIGHTS RESERVED.Trademarks are owned or controlled by the Canadian Real Estate Association (CREA) and identify real estate professionals who are members of CREA (REALTOR®, REALTORS®) and/or the quality of services they provide (MLS®, Multiple Listing Service®)

Listing information last updated on April 26th, 2025 at 1:17am MDT