

## \$340,000 - 220 11080 Ellerslie Road, Edmonton

MLS® #E4431144

**\$340,000**

2 Bedroom, 2.00 Bathroom, 1,102 sqft

Condo / Townhouse on 0.00 Acres

Richford, Edmonton, AB

Welcome to one of the best layouts in the building—a bright and airy 1104 sq. ft. corner unit with 2 bedrooms, 2 full bathrooms, and a flexible den that works perfectly as a home office, studio, or dining area. You'll love the open-concept living space with oversized windows that flood the home with natural light. Elegant finishes include engineered hardwood flooring, granite countertops, and custom closet organizers. Bedrooms are thoughtfully separated for added privacy. The kitchen flows into a sunlit living space, and the spacious private balcony overlooks green space—perfect for morning coffee or evening wind-downs. Includes 2 titled underground stalls, 2 storage lockers (one oversized), and in-suite laundry. The concrete building has top-tier amenities: fitness centre, social lounge with chef's kitchen, rooftop patio, as well as a guest suite available to book for \$75/night. Impeccably maintained and thoughtfully laid out—designed for quiet comfort and effortless living.

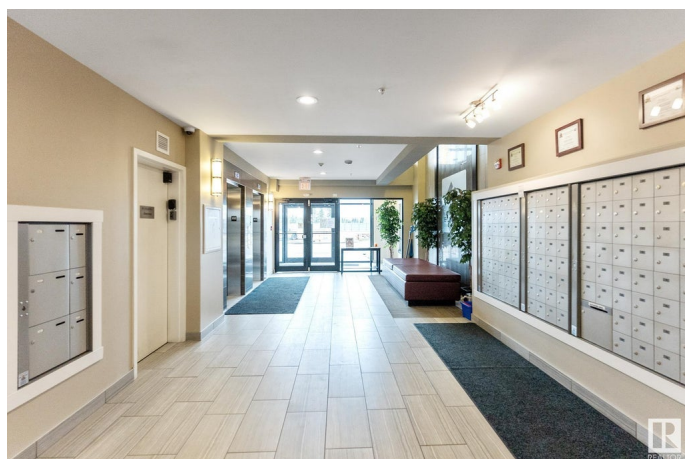
Built in 2014

### Essential Information

MLS® # E4431144

Price \$340,000

Bedrooms 2



Bathrooms	2.00
Full Baths	2
Square Footage	1,102
Acres	0.00
Year Built	2014
Type	Condo / Townhouse
Sub-Type	Lowrise Apartment
Style	Single Level Apartment
Status	Active

### Community Information

Address	220 11080 Ellerslie Road
Area	Edmonton
Subdivision	Richford
City	Edmonton
County	ALBERTA
Province	AB
Postal Code	T6W 2C2

### Amenities

Amenities	Exercise Room, Guest Suite, Parking-Visitor, Patio, Recreation Room/Centre, Social Rooms, Sprinkler System-Fire, Storage Cage, Rooftop Deck/Patio
Parking Spaces	2
Parking	Double Indoor, Heated, Insulated, Underground

### Interior

Interior Features	ensuite bathroom
Appliances	Air Conditioning-Central, Dishwasher-Built-In, Dryer, Garage Control, Microwave Hood Fan, Refrigerator, Stove-Electric, Washer, Window Coverings
Heating	Fan Coil, Natural Gas
# of Stories	6
Stories	1
Has Basement	Yes
Basement	None, No Basement

### Exterior

Exterior	Concrete, Metal, Stucco
----------	-------------------------

Exterior Features	Backs Onto Park/Trees, Golf Nearby, Shopping Nearby
Roof	Flat
Construction	Concrete, Metal, Stucco
Foundation	Concrete Perimeter

### **Additional Information**

Date Listed	April 16th, 2025
Days on Market	13
Zoning	Zone 55
Condo Fee	\$764

DATA IS DEEMED RELIABLE BUT IS NOT GUARANTEED ACCURATE BY THE REALTORS® ASSOCIATION OF EDMONTON. COPYRIGHT 2025 BY THE REALTORS® ASSOCIATION OF EDMONTON. ALL RIGHTS RESERVED. Trademarks are owned or controlled by the Canadian Real Estate Association (CREA) and identify real estate professionals who are members of CREA (REALTOR®, REALTORS®) and/or the quality of services they provide (MLS®, Multiple Listing Service®)

Listing information last updated on April 29th, 2025 at 1:02am MDT