

\$319,000 - 65 465 Hemingway Road, Edmonton

MLS® #E4430050

\$319,000

2 Bedroom, 2.50 Bathroom, 1,208 sqft

Condo / Townhouse on 0.00 Acres

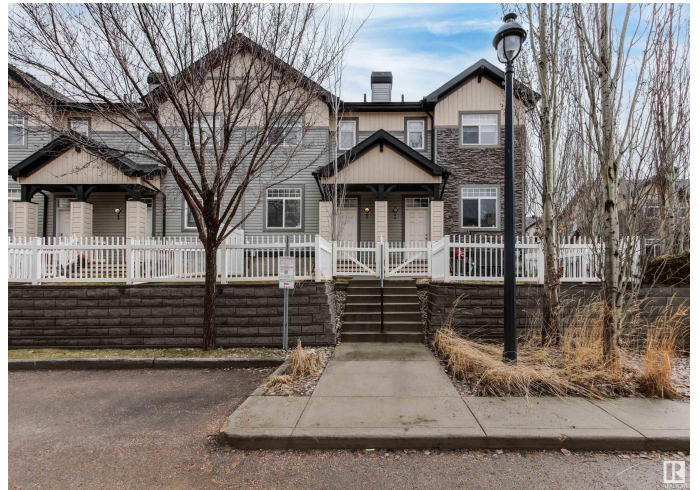
The Hamptons, Edmonton, AB

Step into your new home at Mosaic Meadows! This beautiful two-storey townhouse in The Hamptons offers over 1200 sq ft of modern living space. As you enter, you'll immediately notice the open-concept design that creates a warm and inviting atmosphere. The kitchen is a standout with sleek dark cabinetry, plenty of counter space, a built-in breakfast bar, and a glass tile backsplash. Adjacent to the kitchen, the dining/living room and 2-pc bath leads to a private balcony perfect for enjoying a morning coffee. Upstairs, two spacious primary bedrooms each feature their own ensuite and walk-in closet. The lower level boasts generous storage, a large laundry area, and access to your double-attached garage. The fenced and landscaped front courtyard with a patio area is the perfect spot for your BBQ and entertaining. With lawn care/snow removal included in the low condo fees and visitor parking right outside your front door, convenience is guaranteed. Close to many amenities, this townhouse is a must-see!

Built in 2010

Essential Information

MLS® #	E4430050
Price	\$319,000
Bedrooms	2



Bathrooms	2.50
Full Baths	2
Half Baths	1
Square Footage	1,208
Acres	0.00
Year Built	2010
Type	Condo / Townhouse
Sub-Type	Townhouse
Style	2 Storey
Status	Active

Community Information

Address	65 465 Hemingway Road
Area	Edmonton
Subdivision	The Hamptons
City	Edmonton
County	ALBERTA
Province	AB
Postal Code	T6M 0J7

Amenities

Amenities	Closet Organizers, Detectors Smoke, See Remarks
Parking	Double Garage Attached, Insulated

Interior

Interior Features	ensuite bathroom
Appliances	Dishwasher-Built-In, Dryer, Oven-Microwave, Refrigerator, Stove-Electric, Washer, Window Coverings, See Remarks
Heating	Forced Air-1, Natural Gas
Stories	2
Has Basement	Yes
Basement	Partial, Unfinished

Exterior

Exterior	Wood, Vinyl
Exterior Features	Fenced, Golf Nearby, Landscaped, Playground Nearby, Public Transportation, Schools, Shopping Nearby
Roof	Asphalt Shingles
Construction	Wood, Vinyl

Foundation Concrete Perimeter

Additional Information

Date Listed April 10th, 2025
Days on Market 16
Zoning Zone 58
HOA Fees 183.75
HOA Fees Freq. Annually
Condo Fee \$276

DATA IS DEEMED RELIABLE BUT IS NOT GUARANTEED ACCURATE BY THE REALTORS® ASSOCIATION OF EDMONTON. COPYRIGHT 2025 BY THE REALTORS® ASSOCIATION OF EDMONTON. ALL RIGHTS RESERVED.Trademarks are owned or controlled by the Canadian Real Estate Association (CREA) and identify real estate professionals who are members of CREA (REALTOR®, REALTORS®) and/or the quality of services they provide (MLS®, Multiple Listing Service®)
Listing information last updated on April 26th, 2025 at 10:17am MDT