

\$110,000 - 308 10730 112 Street, Edmonton

MLS® #E4419525

\$110,000

1 Bedroom, 0.50 Bathroom, 706 sqft
Condo / Townhouse on 0.00 Acres

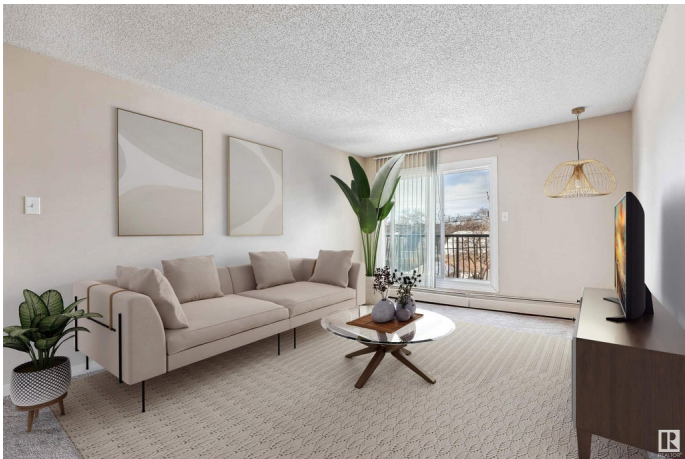
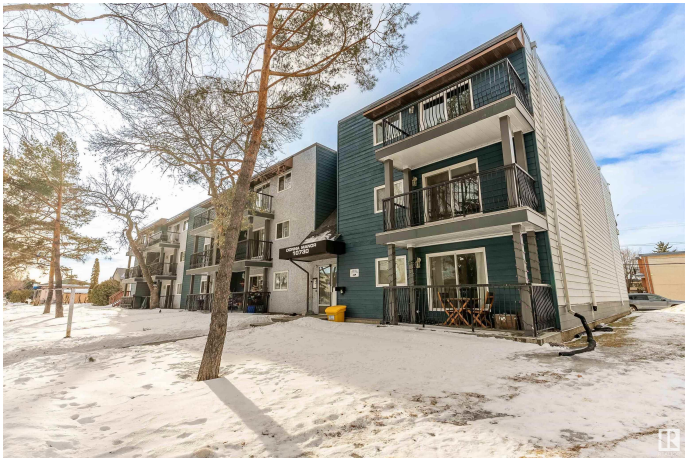
Queen Mary Park, Edmonton, AB

Welcome to this beautifully renovated top-floor condo, ideally situated in the vibrant Queen Mary Park, downtown Edmonton. This unit has been updated this year with fresh paint throughout, brand new flooring, fully renovated bathroom, a brand new washer and dryer, and upgraded kitchen appliances. This west facing unit offers lots of natural sunlight through the large patio windows. Additional highlights include in-suite laundry for your convenience, a generous storage room for all your extras, an assigned parking stall and a spacious balcony for outdoor living. This condo offers the perfect blend of modern updates in an unbeatable location, walking distance to Macewan University, Ice District and 104 Street amenities.

Built in 1981

Essential Information

MLS® #	E4419525
Price	\$110,000
Bedrooms	1
Bathrooms	0.50
Half Baths	1
Square Footage	706
Acres	0.00
Year Built	1981



Type	Condo / Townhouse
Sub-Type	Lowrise Apartment
Style	3 Storey
Status	Active

Community Information

Address	308 10730 112 Street
Area	Edmonton
Subdivision	Queen Mary Park
City	Edmonton
County	ALBERTA
Province	AB
Postal Code	T5H 3H1

Amenities

Amenities	On Street Parking, Closet Organizers, No Animal Home, No Smoking Home, Parking-Visitor, Patio, Storage-In-Suite
Parking	Stall

Interior

Appliances	Dishwasher - Energy Star, Dryer, Refrigerator, Stove-Electric, Washer, Window Coverings
Heating	Baseboard, Electric
# of Stories	3
Stories	4
Has Basement	Yes
Basement	None, No Basement

Exterior

Exterior	Wood, Vinyl
Exterior Features	Public Transportation, Schools, Shopping Nearby, See Remarks
Roof	Asphalt Shingles
Construction	Wood, Vinyl
Foundation	Concrete Perimeter

Additional Information

Date Listed	January 29th, 2025
Days on Market	89
Zoning	Zone 08

Condo Fee \$409

DATA IS DEEMED RELIABLE BUT IS NOT GUARANTEED ACCURATE BY THE REALTORS® ASSOCIATION OF EDMONTON. COPYRIGHT 2025 BY THE REALTORS® ASSOCIATION OF EDMONTON. ALL RIGHTS RESERVED.Trademarks are owned or controlled by the Canadian Real Estate Association (CREA) and identify real estate professionals who are members of CREA (REALTOR®, REALTORS®) and/or the quality of services they provide (MLS®, Multiple Listing Service®)

Listing information last updated on April 28th, 2025 at 2:17pm MDT