

# \$259,900 - 1111 Gyrfalcon Crescent, Edmonton

MLS® #E4417187

**\$259,900**

0 Bedroom, 0.00 Bathroom,  
Single Family on 0.00 Acres

Hawks Ridge, Edmonton, AB

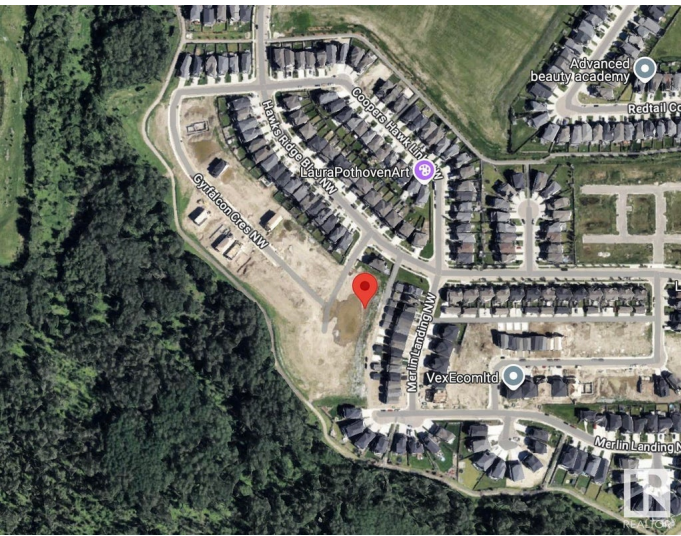
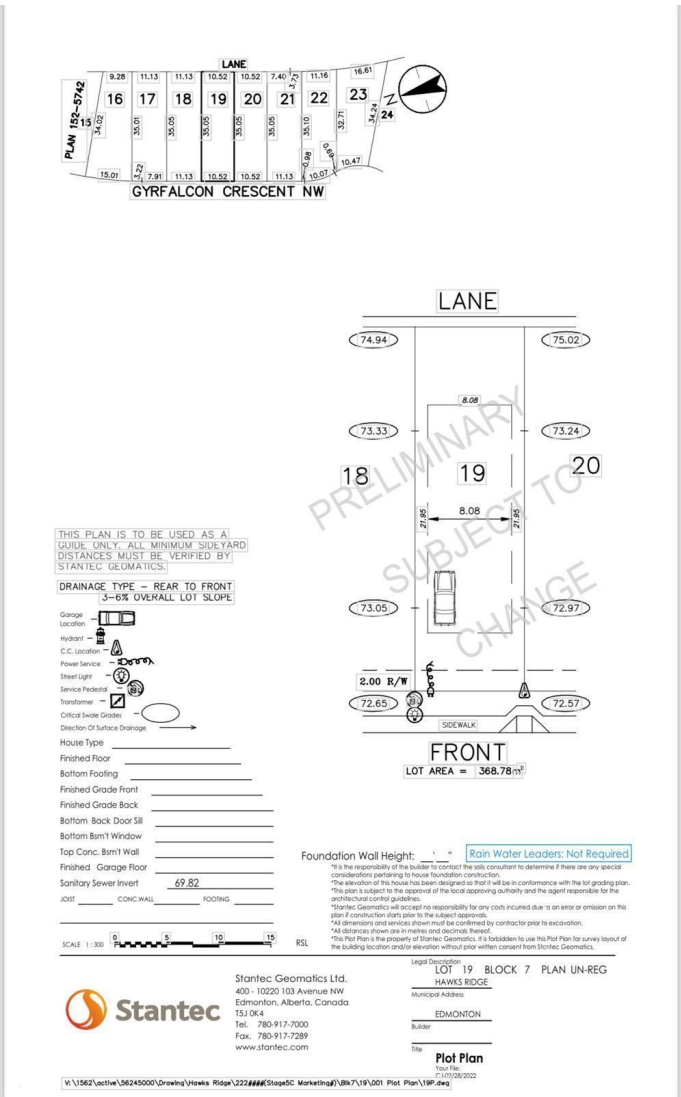
ATTENTION BUILDER !!! Great development opportunity to build your dream home in picturesque Hawks Ridge. Close to shopping, Lois Hole Provincial Park, St. Albert and all of its amenities, and 105 acre natural area full of mature trees, trails/bike paths, preserved wetlands and scenic ponds just outside your door. Live close to nature while taking advantage of city living. Quick access to major traffic arteries such as the Anthony Henday and Yellowhead Trail making your daily commute a breeze. 34.51ft x 114.99ft.

## Essential Information

MLS® #	E4417187
Price	\$259,900
Bathrooms	0.00
Acres	0.00
Type	Single Family
Sub-Type	Vacant Lot/Land
Status	Active

## Community Information

Address	1111 Gyrfalcon Crescent
Area	Edmonton
Subdivision	Hawks Ridge
City	Edmonton
County	ALBERTA



Province AB  
Postal Code T5S 0S5

Exterior

Exterior Features Back Lane, Flat Site, Golf Nearby, Playground Nearby, Shopping Nearby

Additional Information

Date Listed January 6th, 2025  
Days on Market 110  
Zoning Zone 59

DATA IS DEEMED RELIABLE BUT IS NOT GUARANTEED ACCURATE BY THE REALTORS® ASSOCIATION OF EDMONTON. COPYRIGHT 2025 BY THE REALTORS® ASSOCIATION OF EDMONTON. ALL RIGHTS RESERVED.Trademarks are owned or controlled by the Canadian Real Estate Association (CREA) and identify real estate professionals who are members of CREA (REALTOR®, REALTORS®) and/or the quality of services they provide (MLS®, Multiple Listing Service®)  
Listing information last updated on April 26th, 2025 at 8:32am MDT